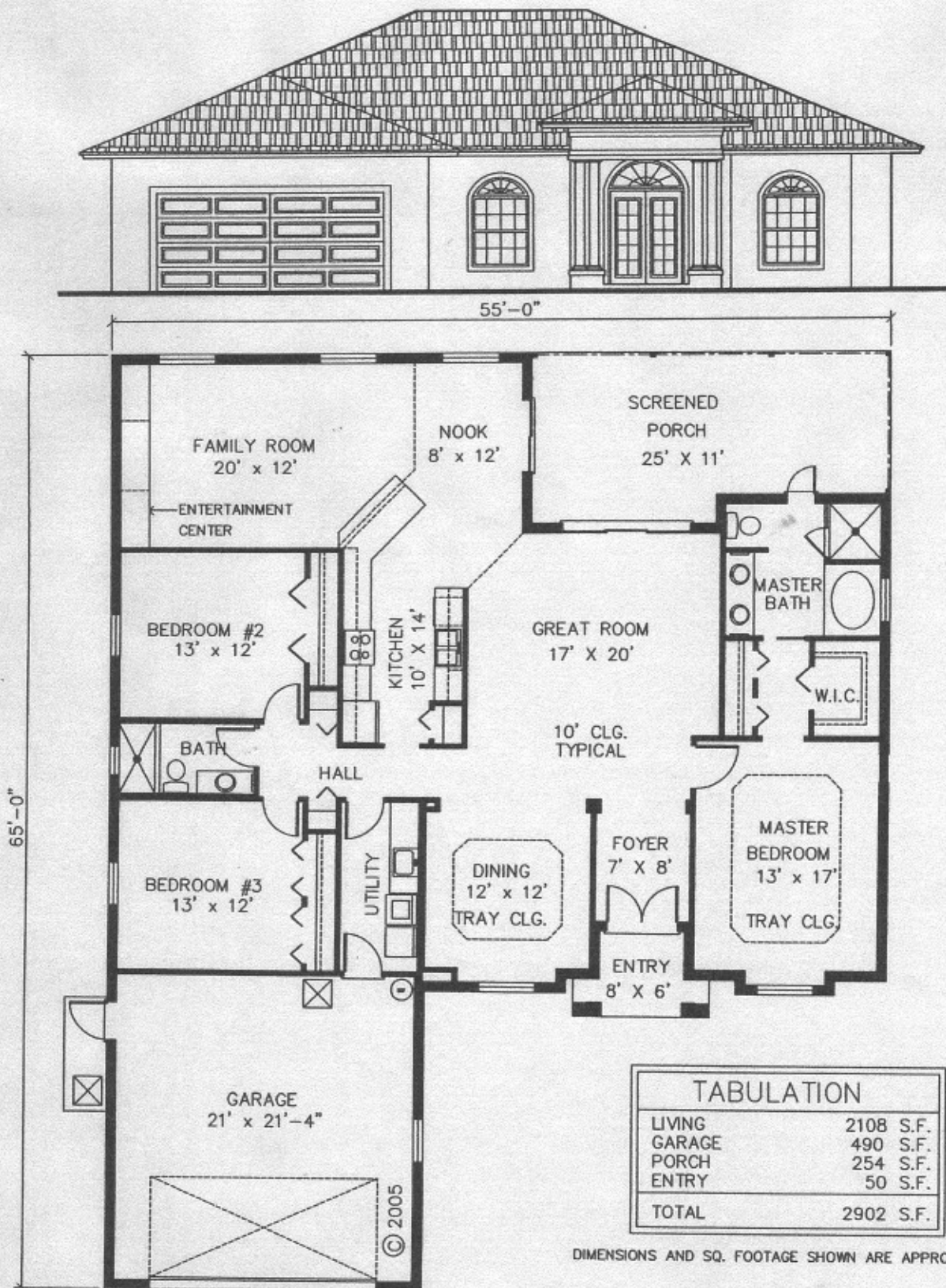


Jasmine Deluxe



TABULATION	
LIVING	2108 S.F.
GARAGE	490 S.F.
PORCH	254 S.F.
ENTRY	50 S.F.
TOTAL	2902 S.F.

DIMENSIONS AND SQ. FOOTAGE SHOWN ARE APPROXIMATE

CEMCO HOMES

CONSTRUCTION ENGINEERING & MANAGEMENT COMPANY, INC.
STATE CERTIFIED GENERAL CONTRACTOR CGC# 040510

Office: 103 Barbara Ct. Sebastian, FL (772) 589-6879

www.cemcohomes.com