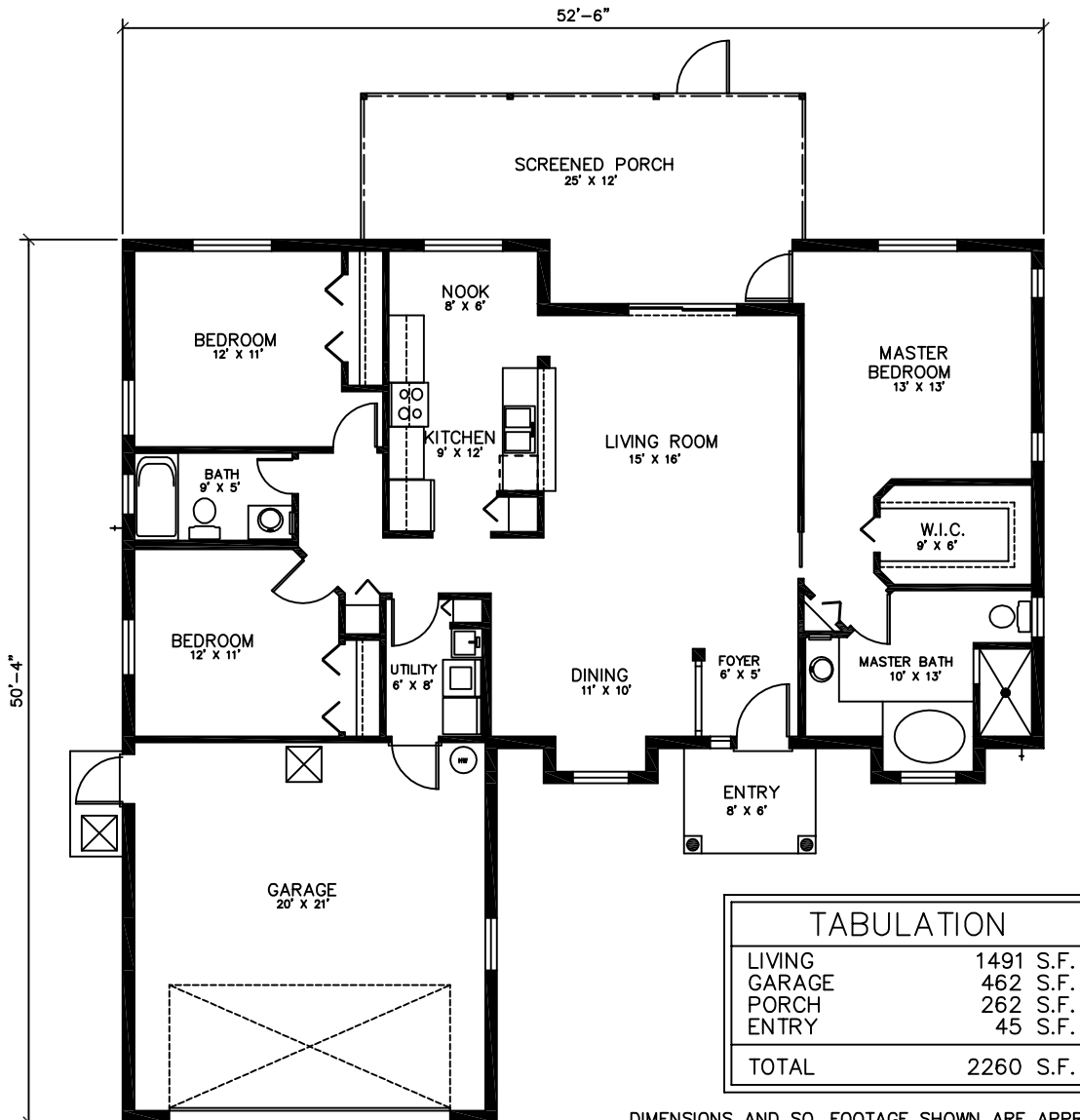


Lily



DIMENSIONS AND SQ. FOOTAGE SHOWN ARE APPROXIMATE



CONSTRUCTION ENGINEERING & MANAGEMENT COMPANY, INC.
STATE CERTIFIED GENERAL CONTRACTOR CGC# 040510

Office: 103 Barbara Ct. Sebastian, FL (772) 589-6879

www.cemcohomes.com